

GUDE Power Cloud Manual

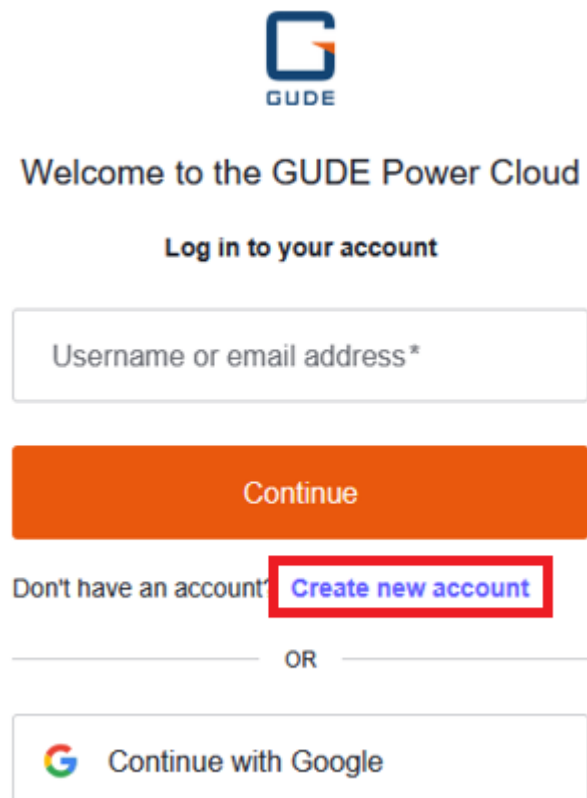


Step 1: Create an account.


Go to the website cloud.gude-systems.com and click **Continue**.



Click **Create new account** to create an account.



Enter a valid business email address and click **Continue**. In the next step, choose a username and password. Complete the registration by clicking **Register**.



Welcome to the GUDE Power Cloud


Create Your Account


Email address*

[Continue](#)

Already have an account? [Login](#)

OR

 Continue with Google




Welcome to the GUDE Power Cloud

Create Your Account

[Edit](#)

Username*

Password* 

Your password must contain:

- ✓ At least 8 characters
- ✓ At least 3 of the following:
 - ✓ Lower case letters (a-z)
 - ✓ Upper case letters (A-Z)
 - ✓ Numbers (0-9)
 - ✓ Special characters (e.g. !@#\$\$%^&*)

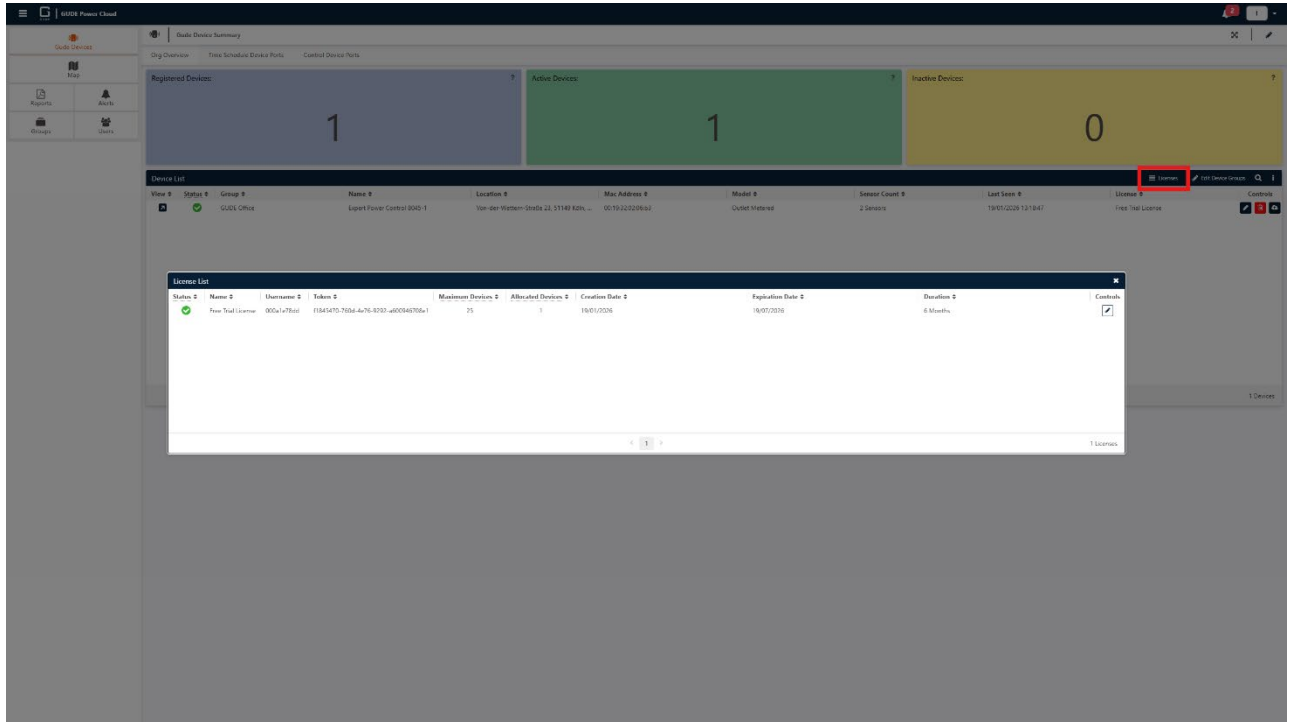
[Register](#)

Already have an account? [Login](#)

After completing the registration, you will receive a verification email which you must confirm.

Step 2: Adding a GUDE PDU.

After registration, you will receive a free trial license, which can be found in the dashboard under **Gude Device Summary > Licenses**.



Open the WebGUI of the GUDE PDU and go to **Configuration > Protocols > MQTT**, then enable MQTT (**Enable MQTT: yes**). The following settings are required:

- Broker: mqtt.gude-systems.com
- TLS: yes
- TCP Port: 8883
- Username: License Username from the GUDE Power Cloud
- Set new password/Repeat password: Token-ID from the GUDE Power Cloud
- Client ID: MAC-Address of your GUDE PDU
- Permit CLI commands: yes
- Publish device data summary interval: 300 s
- **IMPORTANT:** All fields not listed above must remain unchanged.

If the connection to the MQTT-Broker is successful, you will see the following message in the MQTT Logs: “MQTT client subscribed 'de/gudesystems/epc/[MAC]/cmd/#' successfully”.

MQTT

Enable MQTT: ☒ yes ☐ no

Broker:

TLS: ☒ yes ☐ no

TCP Port: (Default: 8883)

Username:

Set new password:

Repeat password:

Client ID:

Quality of Service (QoS):

Keep-alive ping interval: s (minimum 10s)

Topic Prefix:
de/gudesystems/epc/00:19:32:02:06:b3

Permit CLI commands: ☒ yes ☐ no

Publish device data summary interval: s (0=disabled)

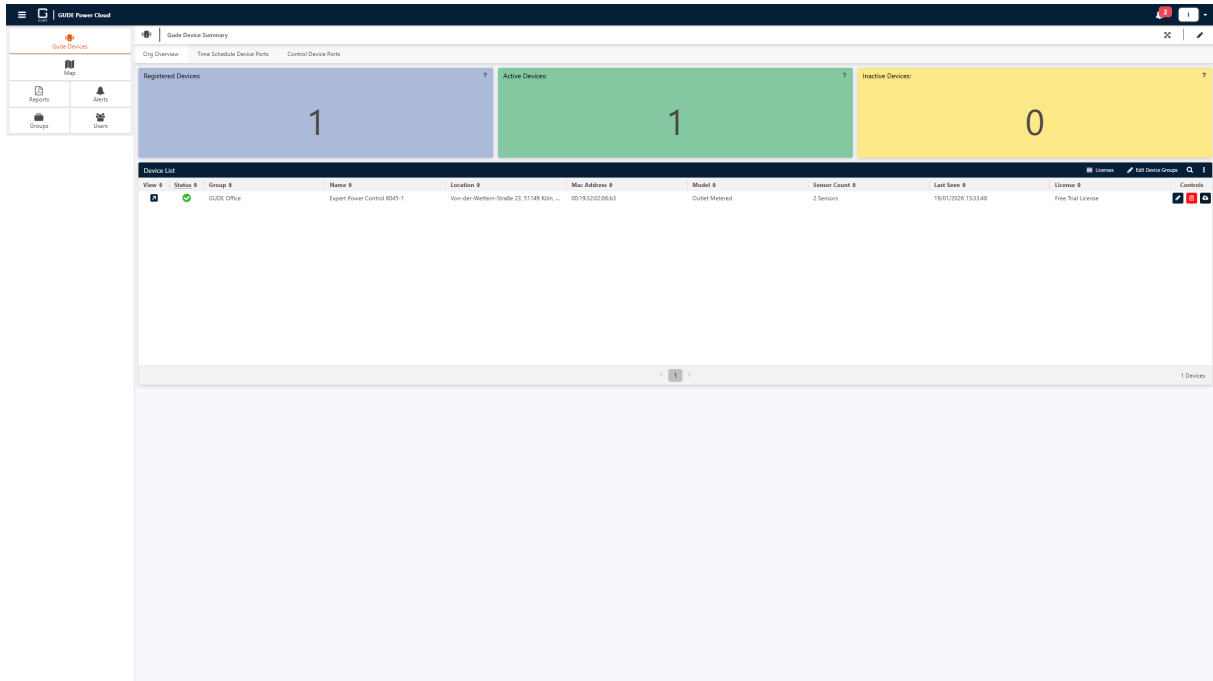
MQTT Logs

- MQTT client subscribed 'de/gudesystems/epc/00:19:32:02:06:b3/cmd/#' successfully
- MQTT client connected
- MQTT sending client id:'00:19:32:02:06:b3' username:'000a1e78dd'
- MQTT broker connected
- MQTT broker DNS resolved
- MQTT broker DNS not yet resolved
- MQTT resolving host 'mqtt.gude-systems.com' TCP port 8883

MQTT Broker Status

- Broker DNS ready, connected since 4 seconds
- Last publish 2 seconds ago

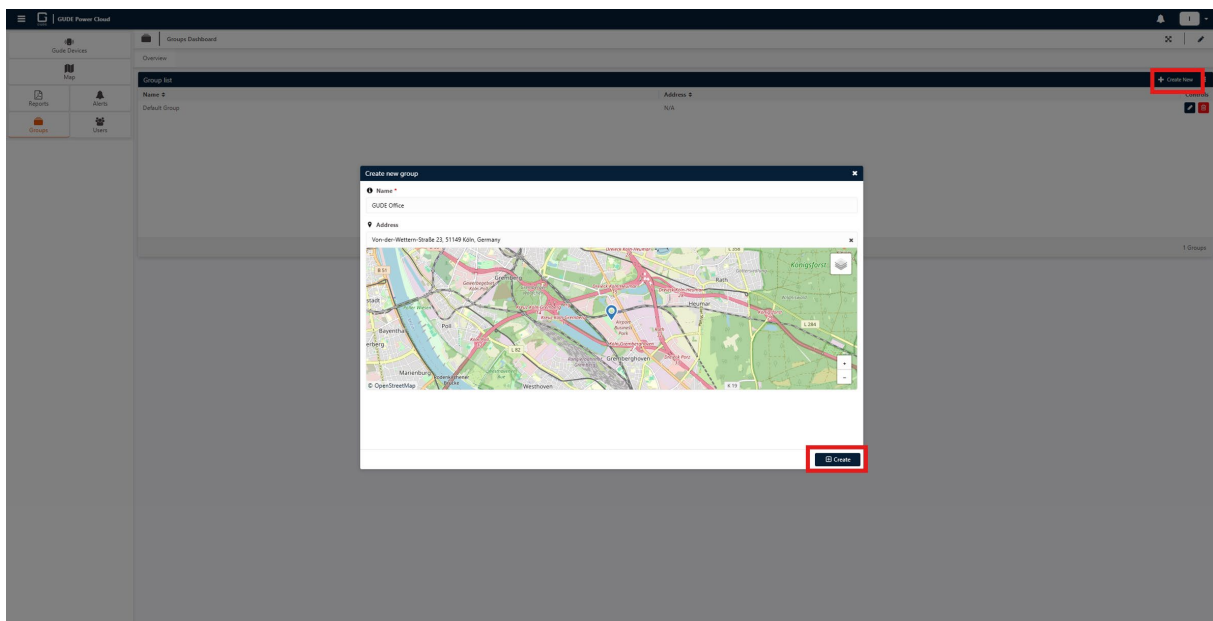
After a maximum of 5 minutes, your GUDE PDU will be automatically added to your account and will appear in the ***GUDE Device Summary*** overview.



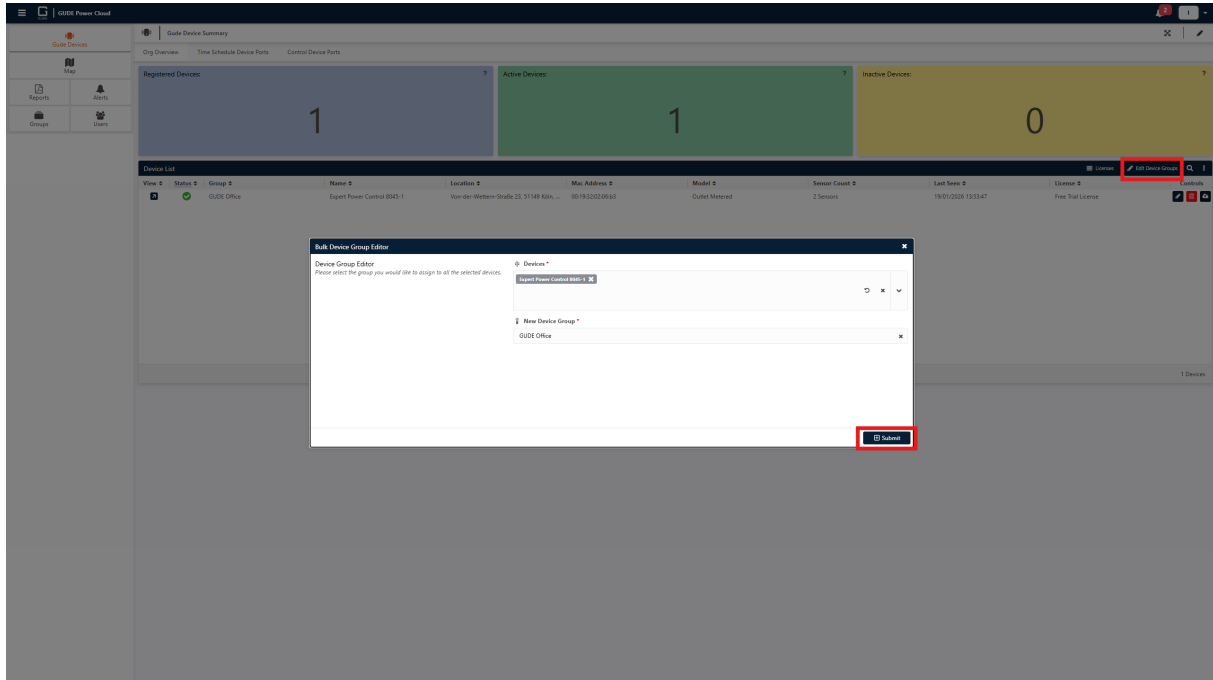
Step 3: Move a GUDE PDU to a Group.

Groups allow you to organize your GUDE PDUs systematically. Groups can represent locations, rooms, floors, customers, etc.

To create a group, go to the ***Groups*** dashboard and click ***Create new***. Enter a name and optionally an address, then click ***Create***.



Navigate back to the device overview under **Gude Devices > Gude Device Summary**.
Using **Edit Device Groups**, you can select multiple GUDE PDU's via multi-selection and assign them to a group. Complete the group assignment by clicking **Submit**.



GUDE Systems GmbH
Von-der-Wettern-Str. 23
51149 Köln

E-Mail: info@gude-systems.com
Web: www.gude-systems.com
Tel.: +49-221-985 925 0